

Manual de Instalação da VPN

DOWNLOAD DA VERSÃO CORRETA DO CLIENTE DE VPN	1
INSTALAÇÃO DO CLIENTE DE VPN - WINDOWS	5
CONFIGURAÇÃO DO CLIENTE DE VPN - WINDOWS	8
CONFIGURAÇÃO DO CLIENTE DE VPN ANDROID E IOS	16
CONFIGURAÇÃO DO CLIENTE DE VPN MAC	16

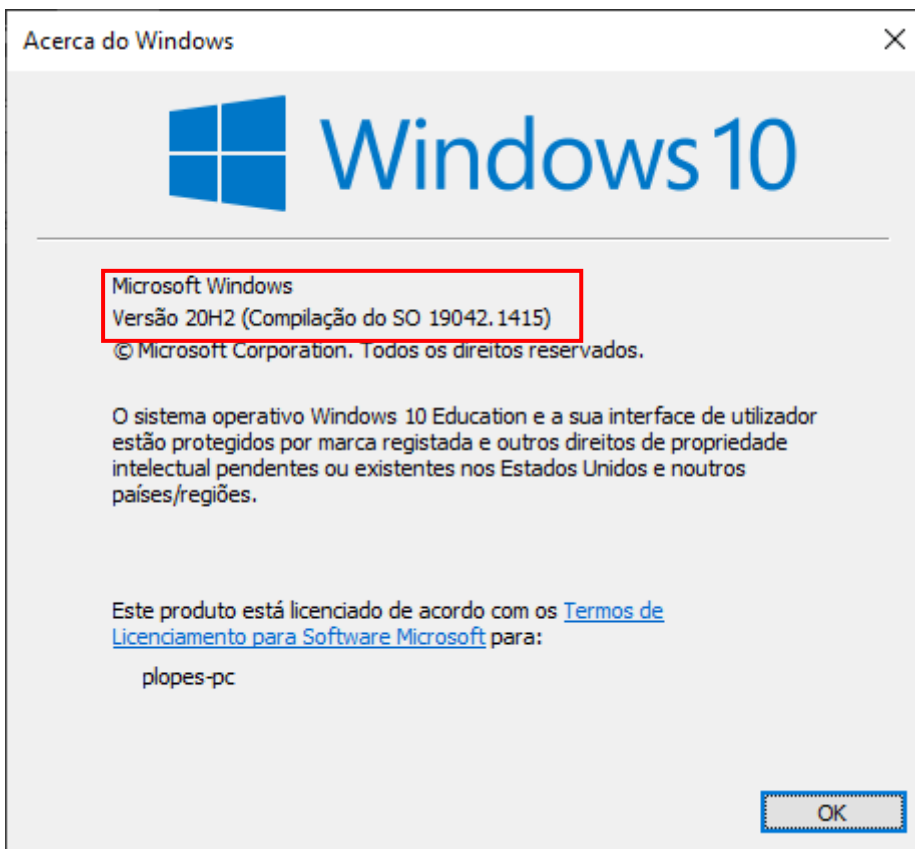
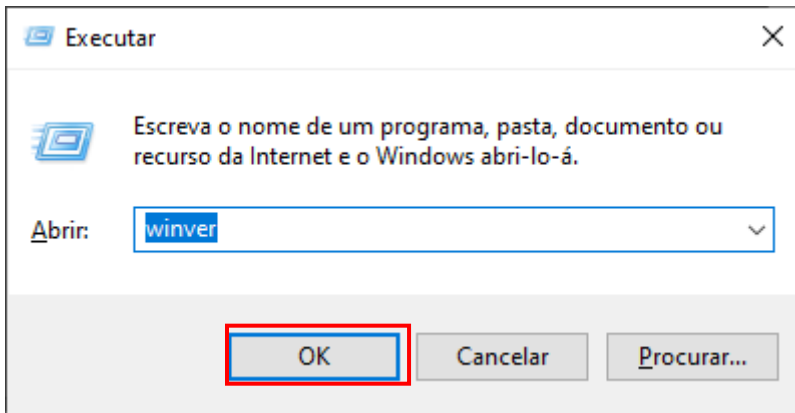
Download da versão correta do cliente de VPN

Link para download da versão do cliente VPN

https://supportcenter.checkpoint.com/supportcenter/portal?eventSubmit_doGoviewsolution_details=&solutionid=sk115192

Ver a Versão do Windows





Mediante a versão do seu SO escolha o software correto.

the third party.

OS Support timeline:

Windows

OS Version	Endpoint Train Client Versions / Large Scale Client Versions	Official OS Release Date	Endpoint Client EA	Endpoint Client GA
Windows 10 Anniversary Update (1607)	E80.64 / EP6.0	August 2, 2016	July 31, 2016	August 22, 2016 / September 29, 2016
Windows Server 2016 (1607)	E80.64 / EP6.0	September 26, 2016	July 31, 2016	August 22, 2016 / September 29, 2016
Windows 10 Creators Update (1703)	E80.70	April 5, 2017	March 31, 2017	May 14, 2017
Windows 10 Fall Creators Update (1709)	E80.71	October 17, 2017	October 3, 2017	November 30, 2017
Windows 10 April 2018 Update (1803)	E80.83	April 30, 2018	April 12, 2018	May 15, 2018
Windows 10 October 2018 Update (1809)	E80.90	November 13, 2018	December 6, 2018	December 31, 2018
Windows Server 2019	E80.90	October 2018	December 6, 2018	December 31, 2018
Windows 10 May 2019 Update (1903)	E81.10	May 21, 2019	June 26, 2019	June 30, 2019
Windows 10 November 2019 Update (1909)	E82.10	November 12, 2019	November 12, 2019	November 24, 2019
Windows 10 May 2020	E82.20	May 27, 2020	July 13, 2020	August 24, 2020

Escolha a versão correta do software. “VPN Standard Client”

Endpoint Security Homepage is now available.

Notes:

- To support SmartLog or SmartView Tracker reporting with Endpoint Security Clients for all supported servers (except R80.20 and higher), you must update the log schema. Follow instructions in [sk106662](#).
- Starting from E80.85, anonymized incident related data is sent to Check Point ThreatCloud, by default. See [sk129753](#).
- This release includes all limitations of earlier releases unless explicitly shown as resolved.

[Click Here to Show the Entire Article](#)

List of New Features in E86.00

[Show / Hide this section](#)


In a Nutshell

Item	Description	Download Link
Managed Client	E86.00 Endpoint Security Clients for Windows OS	[ZIP]
	E86.00 Endpoint Security Clients for Windows OS - Dynamic package	[EXE]
VPN Standalone Client	E86.00 Remote Access Clients for Windows	[MSI]
Capsule Docs	E85.40 Capsule Docs Standalone Client	[EXE]
Documentation	E86.00 Endpoint Security Client for Windows Release Notes sk164896 - Video: How to deploy and upgrade Endpoint Security Client?	

List of Resolved Issues and Enhancements in E86.00

[Show / Hide this section](#)

Support Center > Search Results > Download Details

Search Support Center 

Download Details

E86.00 Check Point Remote Access VPN Clients for Windows

[Download](#)

Details

File Name	E86.00_CheckPointVPN.msi
Product	SecuRemote, Check Point Mobile, Endpoint Security VPN
Version	E86
OS	Windows
Build Number	
MD5	cddb7e6317622ad51bfdd1a8ca54b12

[Show more details](#) ▾

Having problems downloading the file? [Click here](#) for help.

Download Agreement

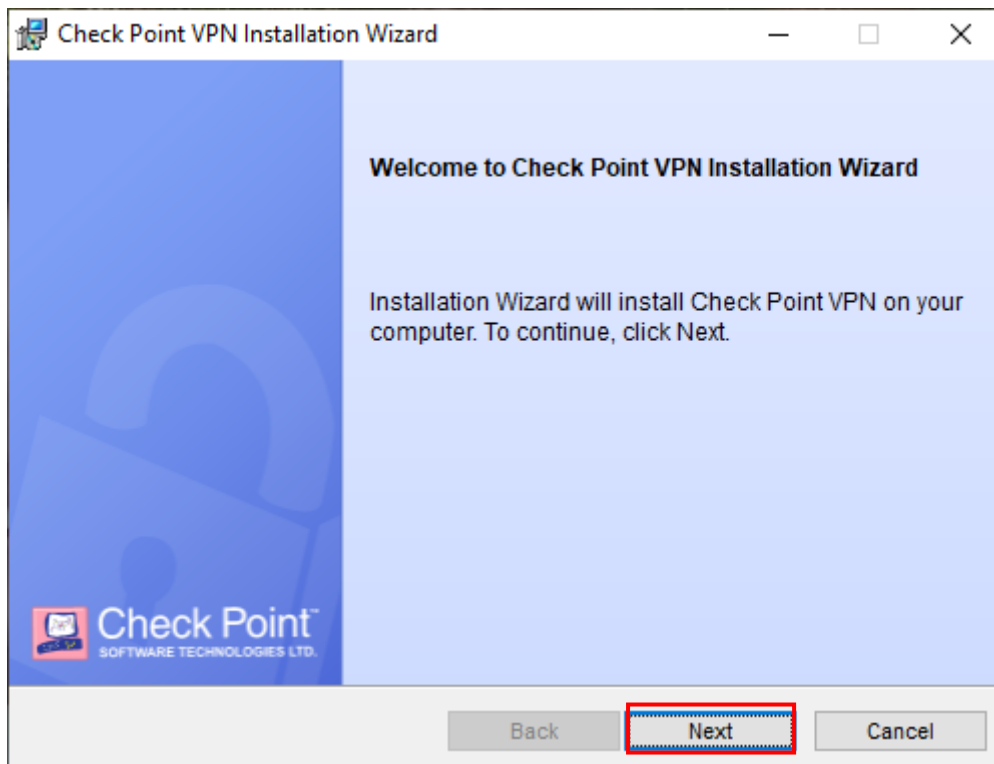


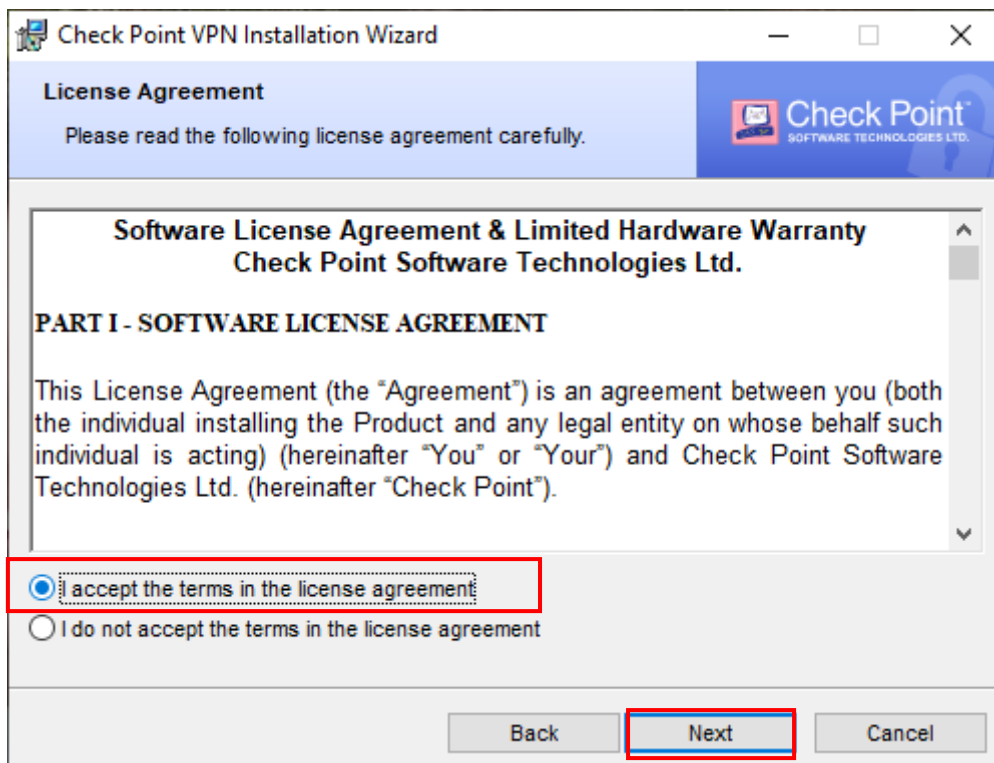
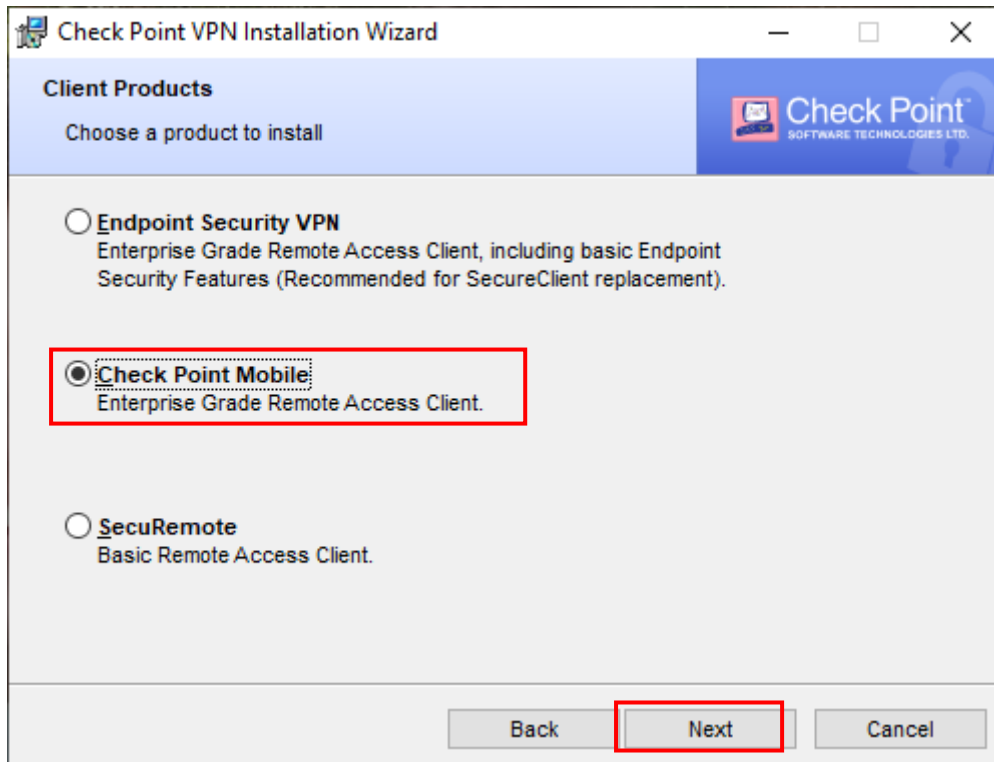
PLEASE READ THIS AGREEMENT CAREFULLY.

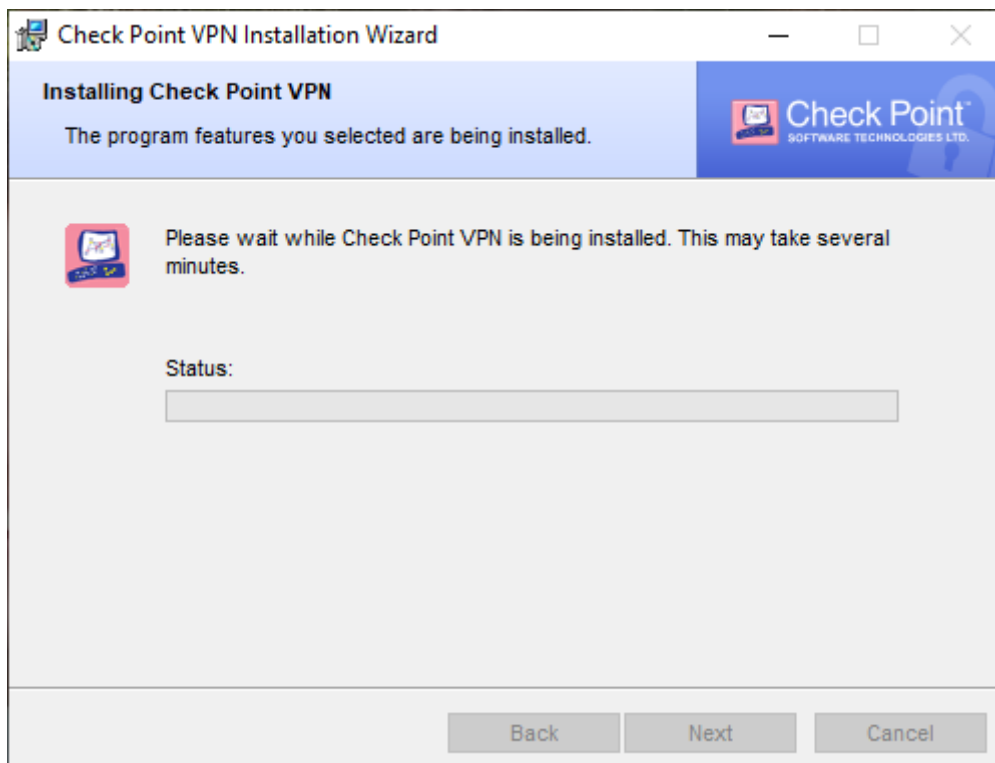
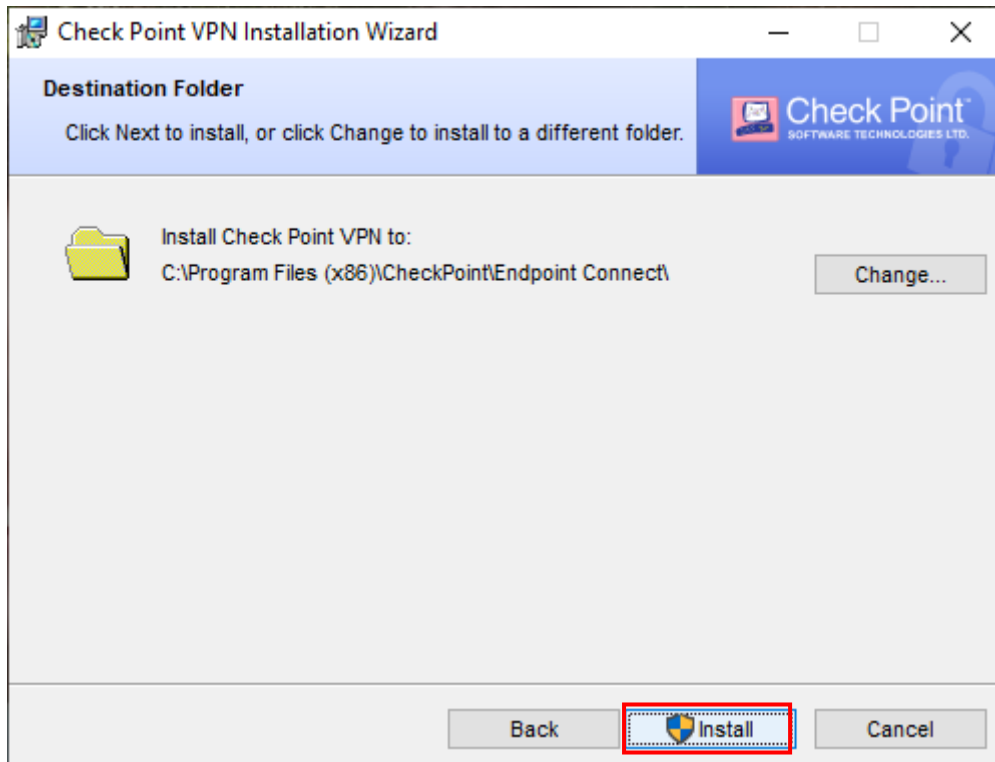
BY CLICKING ON THE "DOWNLOAD" BUTTON, YOU EXPRESSLY AGREE TO BE BOUND BY THE TERMS AND CONDITIONS OF THIS DOWNLOAD AGREEMENT.

This Software Download Agreement ("Agreement") is between you (either as an individual or company) and Check Point Software Technologies Ltd. ("Check Point"), for the software and documentation provided by

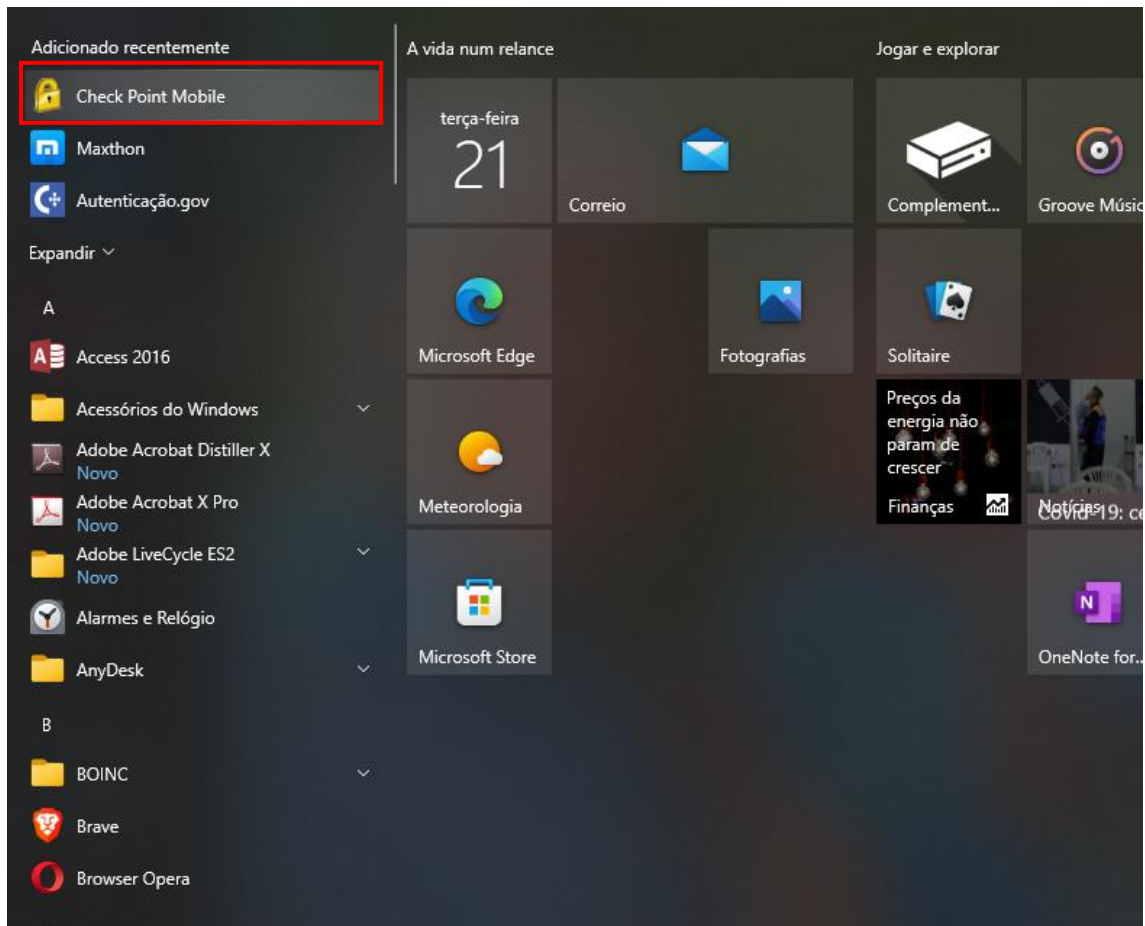
Instalação do cliente de VPN - Windows

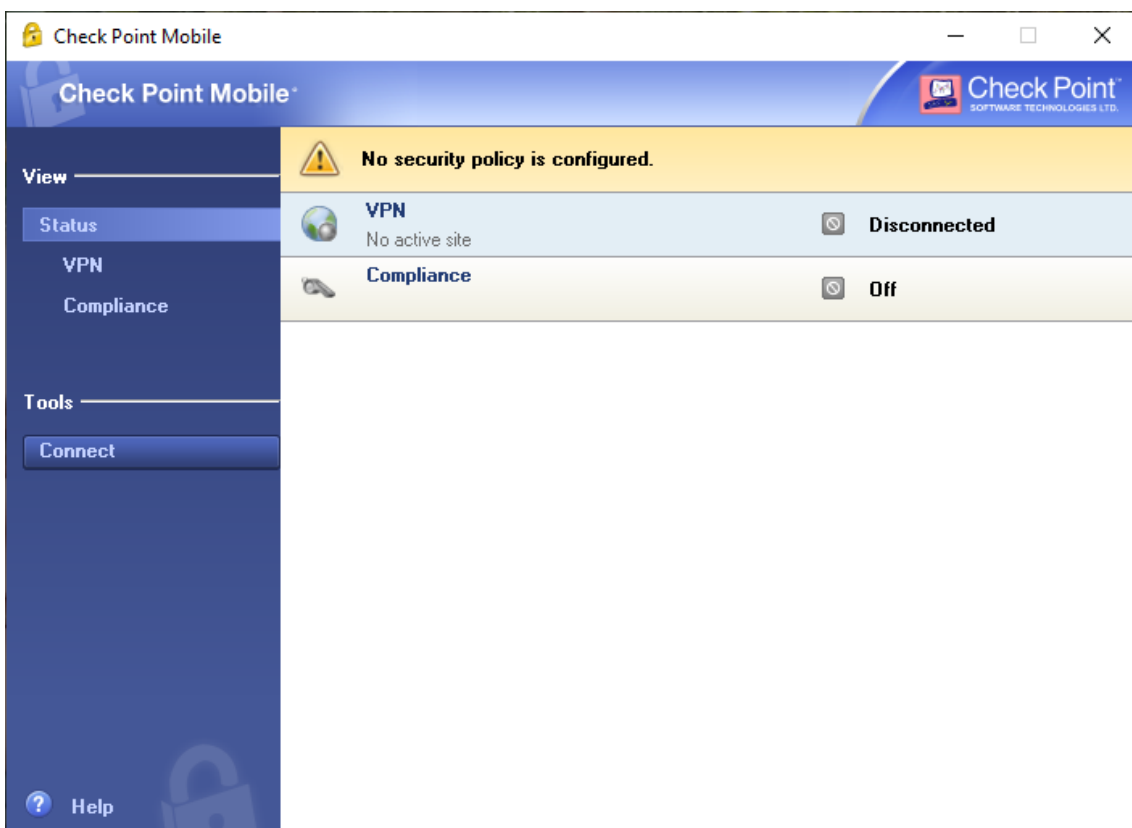
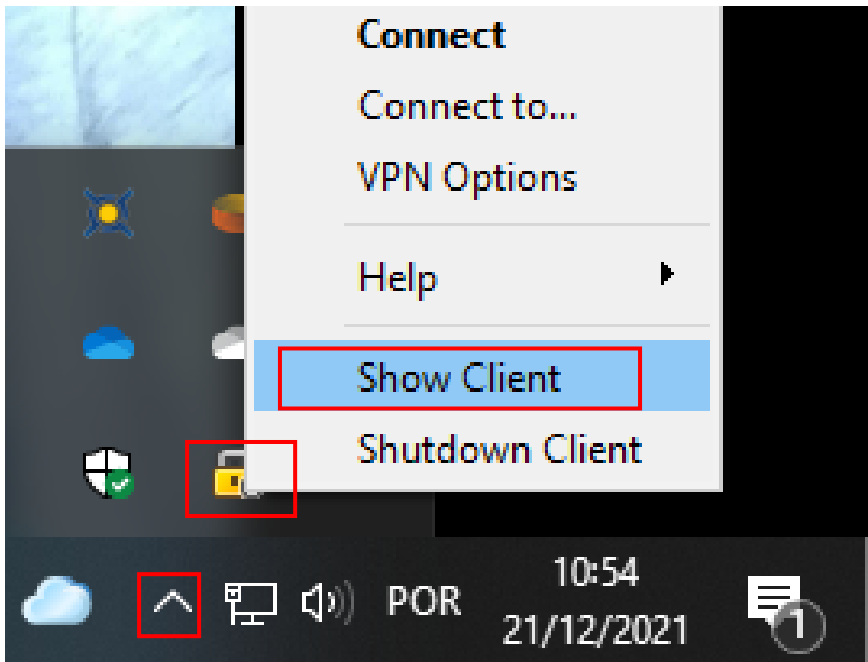


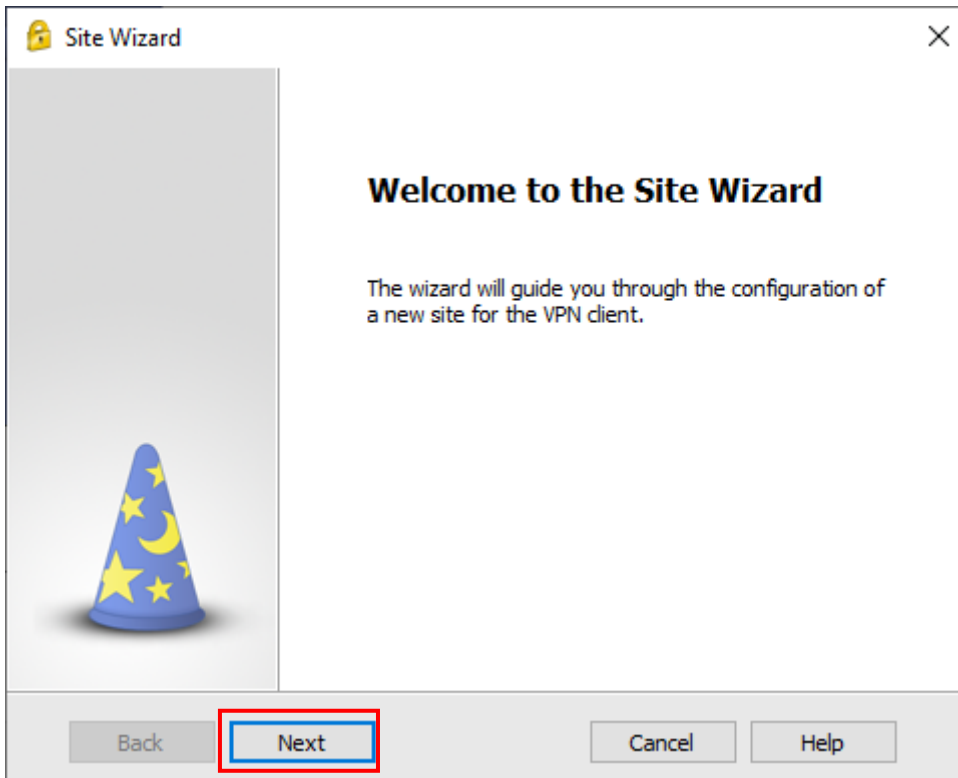
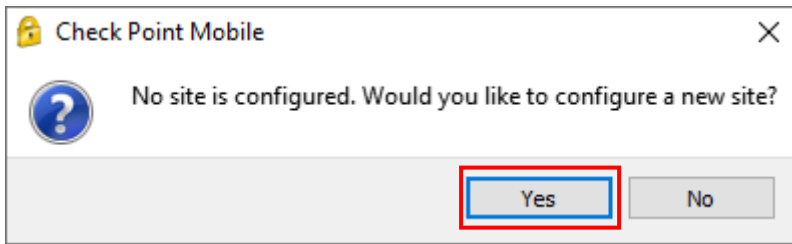


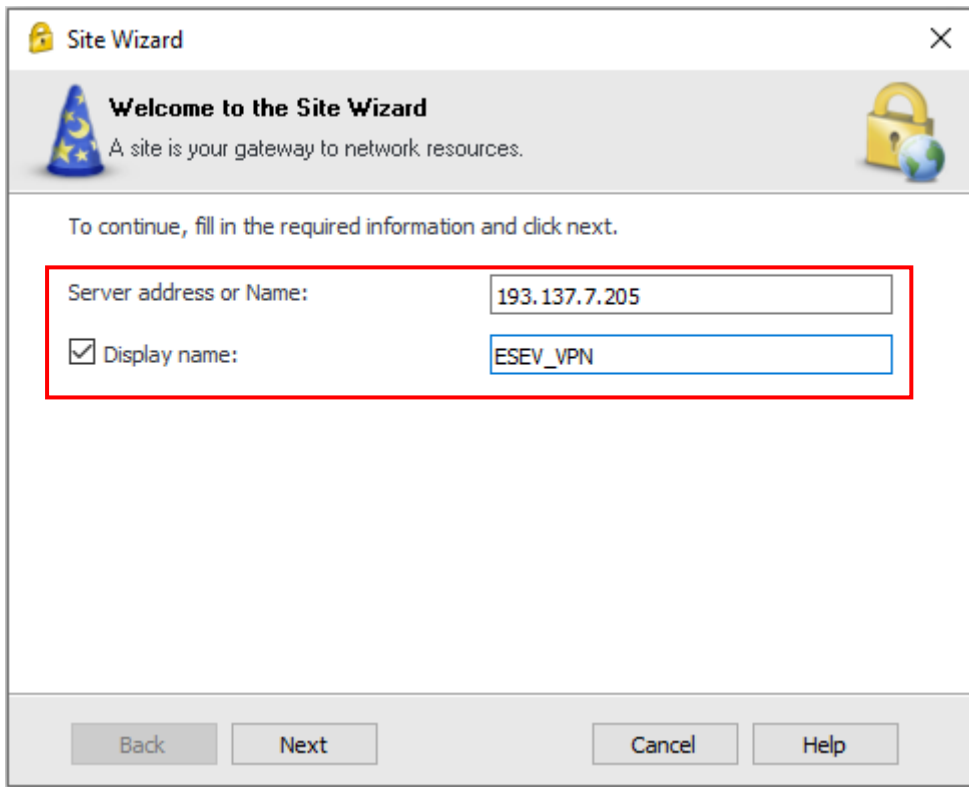


Configuração do cliente de VPN - Windows









Site Wizard

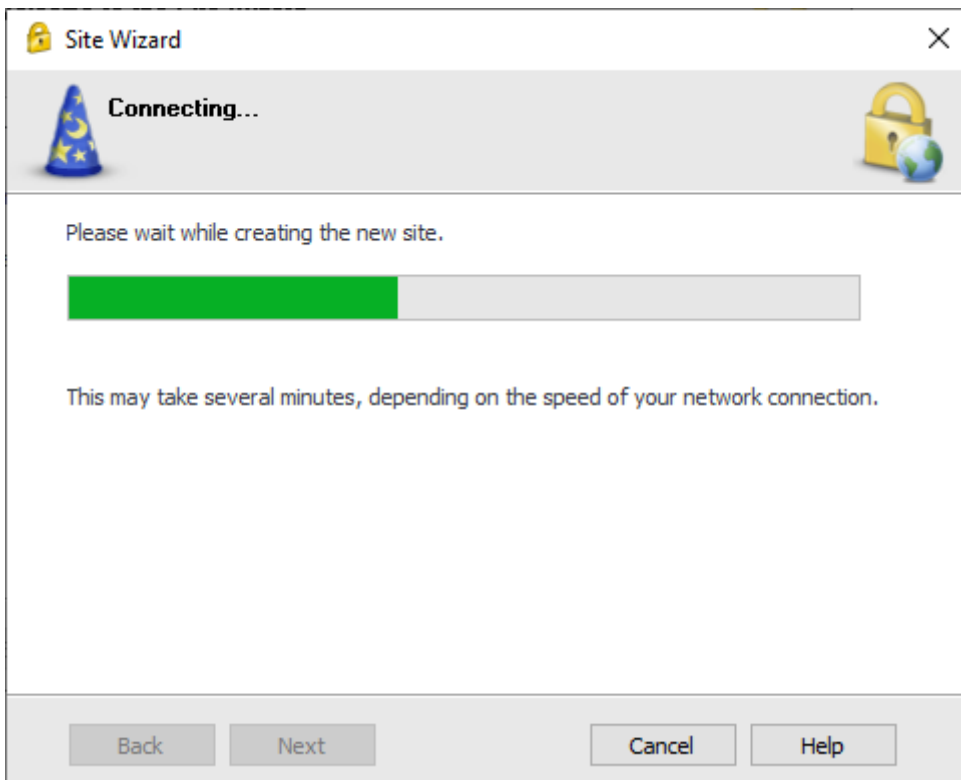
Welcome to the Site Wizard
A site is your gateway to network resources.

To continue, fill in the required information and click next.

Server address or Name: 193.137.7.205

Display name: ESEV_VPN

Back Next Cancel Help



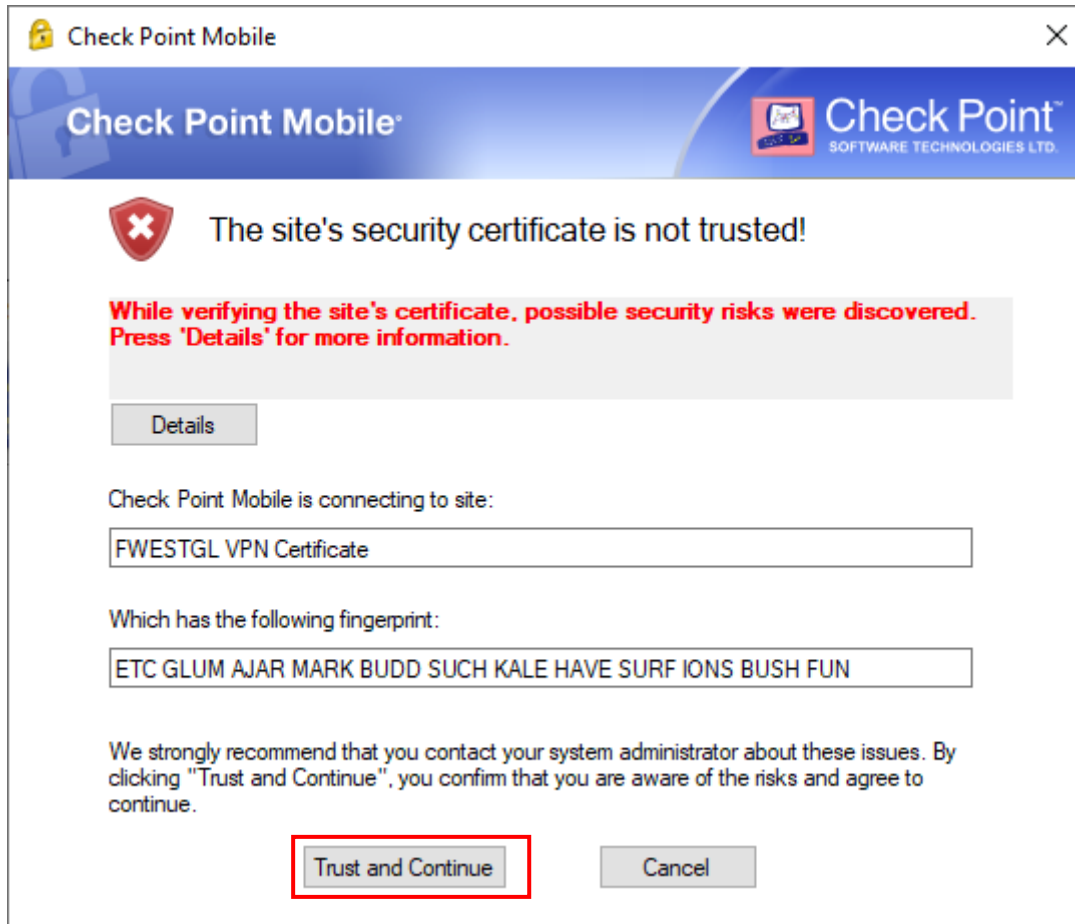
Site Wizard

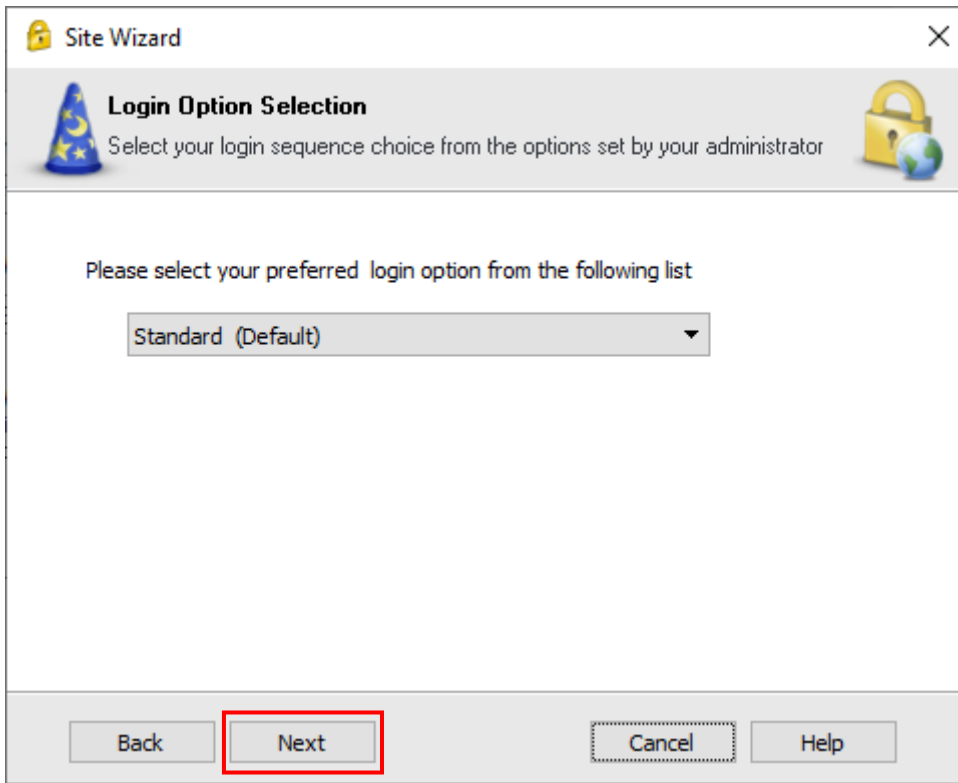
Connecting...

Please wait while creating the new site.

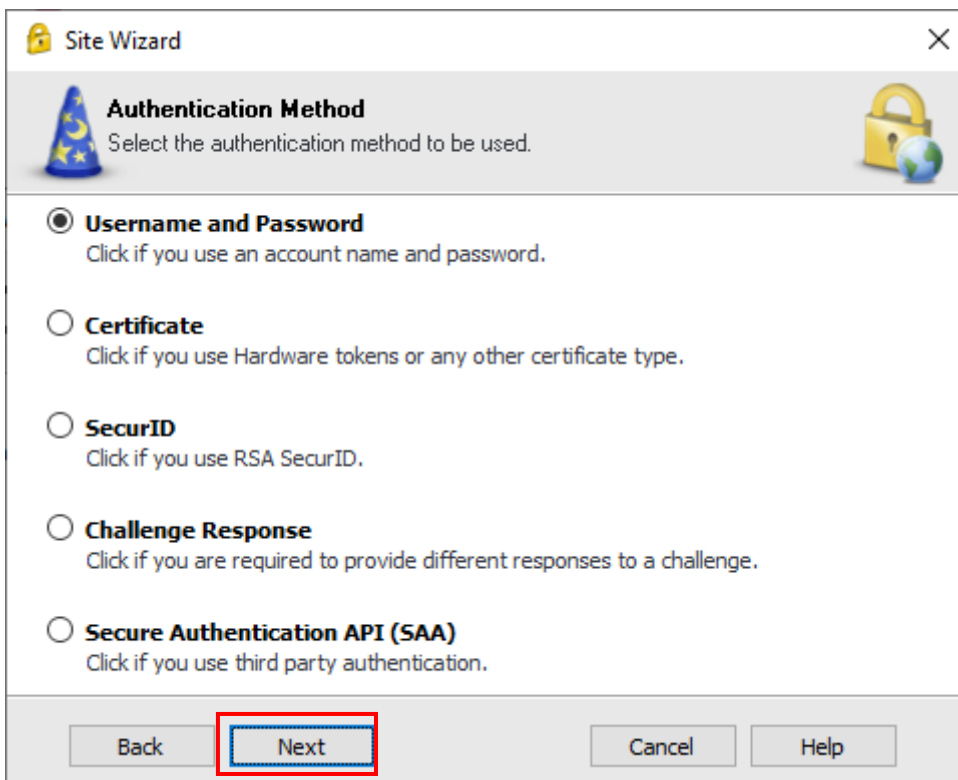
This may take several minutes, depending on the speed of your network connection.

Back Next Cancel Help

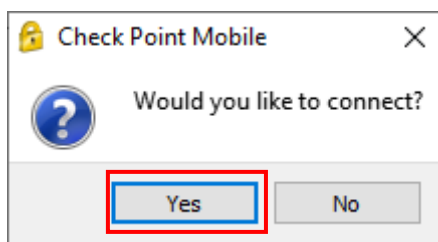
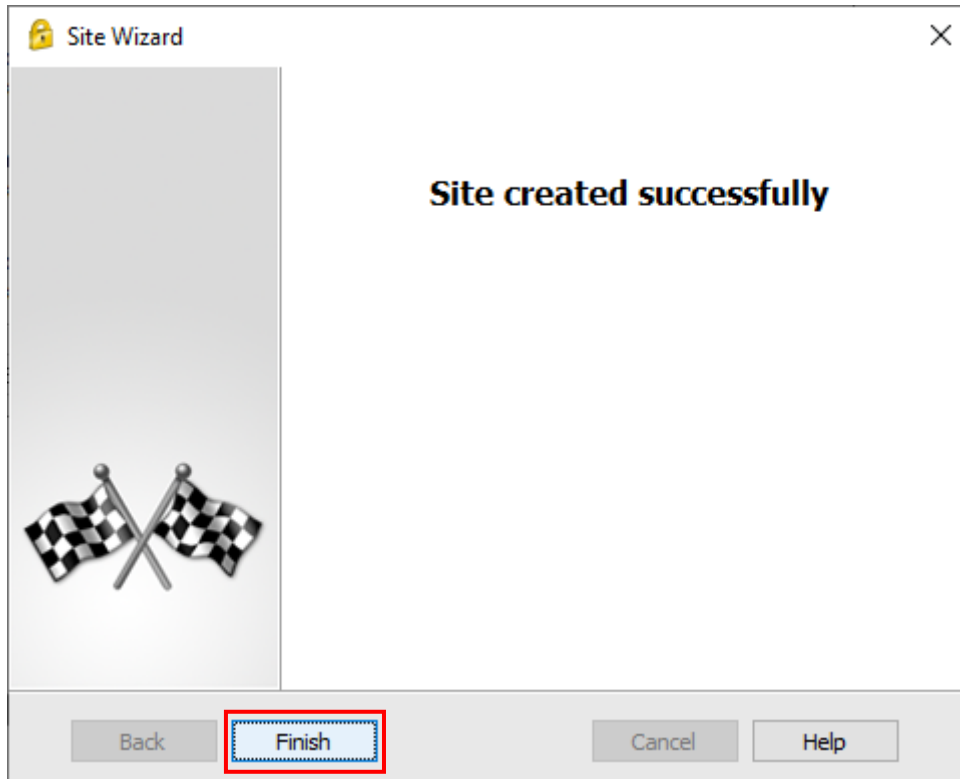


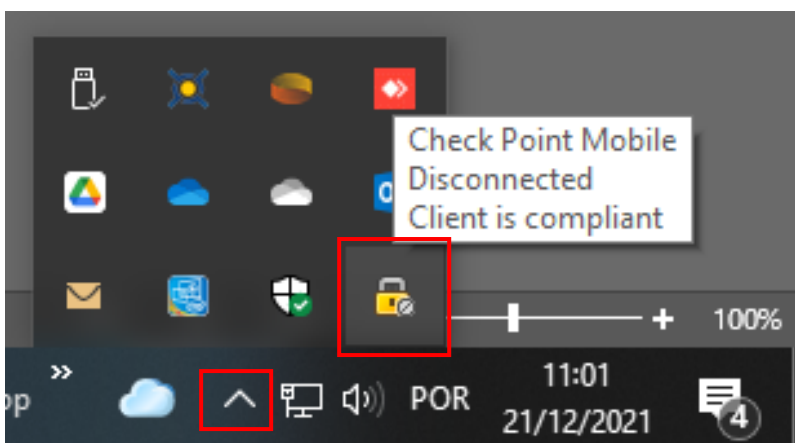
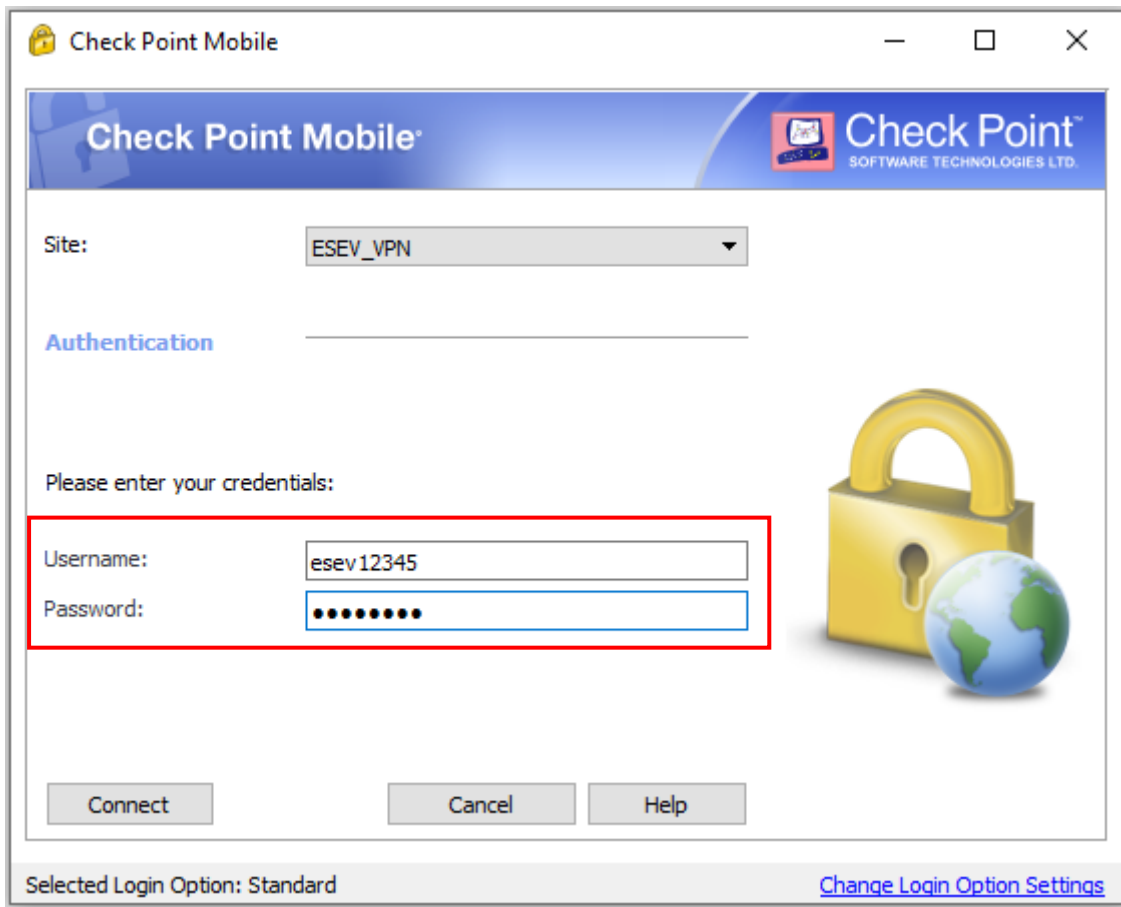


The screenshot shows a window titled "Site Wizard" with a close button (X) in the top right corner. Below the title bar is a header area with a wizard hat icon on the left, the text "Login Option Selection", and a padlock icon on the right. Underneath the header, there is a sub-header "Select your login sequence choice from the options set by your administrator". The main content area contains the instruction "Please select your preferred login option from the following list" followed by a dropdown menu currently showing "Standard (Default)". At the bottom of the window, there are four buttons: "Back", "Next" (highlighted with a red rectangle), "Cancel", and "Help".



The screenshot shows a window titled "Site Wizard" with a close button (X) in the top right corner. Below the title bar is a header area with a wizard hat icon on the left, the text "Authentication Method", and a padlock icon on the right. Underneath the header, there is a sub-header "Select the authentication method to be used.". The main content area contains five radio button options, each with a description: "Username and Password" (selected), "Certificate", "SecurID", "Challenge Response", and "Secure Authentication API (SAA)". At the bottom of the window, there are four buttons: "Back", "Next" (highlighted with a red rectangle), "Cancel", and "Help".





Configuração do cliente de VPN Android e IOS

Para instalação em equipamentos Android e IOS usar a aplicação **Capsule Checkpoint**. Os dados de configuração são os mesmos do windows.

Configuração do cliente de VPN MAC

https://supportcenter.checkpoint.com/supportcenter/portal/role/supportcenterUser/page/default.psml/media-type/html?action=portlets.DCFileAction&eventSubmit_doGetdcdetails=&fileid=120374

Para instalação em equipamentos MAC usar o link anterior. Os dados de configuração são os mesmos do windows.